

THE EXPERTS' CHOICE

INVEREX 500

Modified Sine Wave Inverter Ideal To Long Backup for Home and Office Appliances



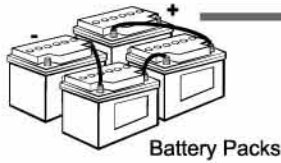
The INVEREX 500 converts DC power into modified sine wave AC power. With a 300-watt continuous output and compact design, the unit is ideal for running TVs, stereos, laptop and desktop computers and other home appliances. INVEREX 500 will automatically transfer to inverter and provide power when AC supply is interrupted unexpectedly.

Product Features:

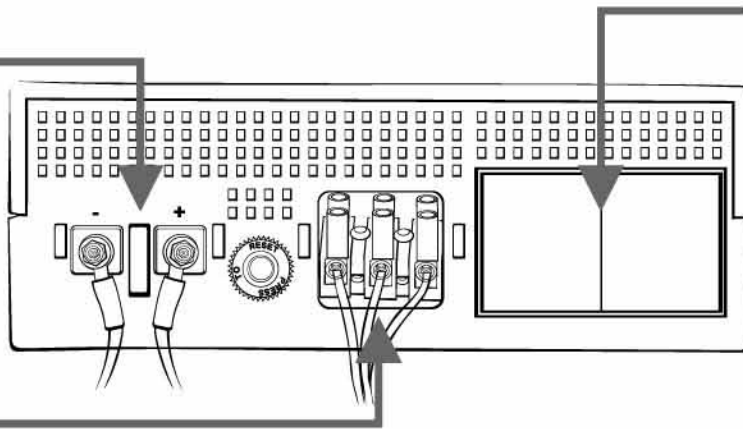
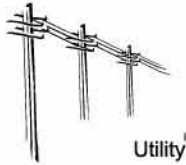
- User selectable for accepting wider input voltage.
- Full automatic and silent operation.
- Rack Tower design.
- High Frequency.
- Off mode charging.
- Available in 5 AC outlet configurations: NEMA, Schuko, French, India, and BS1363.
- Compact size for convenient use and storage.
- Built-in 8Amp super charger for up to 100Ah battery.
- Small scale and cost effective inverter for home appliances and office equipment.



DC Input



AC Input



AC Output

(NEMA, Schuko, French, India, and BS1363)

Home Appliances



Office Equipment



INVEREX SPECIFICATION

MODEL	INVEREX 500	
CAPACITY	VA/W	500VA/300W
INPUT	Nominal Voltage	110/120VAC or 220/230/240VAC
	Voltage Range	90-145VAC or 170-280VAC (Narrow Range) 50-145VAC / 90-280VAC (Wide Range)
OUTPUT	Voltage	120VAC or 230VAC
	Voltage Regulation(Batt. Mode)	+10% / -18%
	Frequency	50Hz or 60Hz
	Frequency Regulation (Batt. Mode)	+/- 0.1Hz
	Output Waveform	Modified Sinewave
BATTERY & CHARGER	Charger Current	8 Amp +/- 1Amp
	Floating Voltage	13.7V +/- 0.2V
	Overcharge Protection	14.5V +/- 0.3V charger stops and fault
TRANSFER TIME	Typical	8ms
EFFICIENCY	DC to AC	>80%
INDICATOR	AC Mode	Green lighting
	Battery Mode	Yellow lighting
	Overload	Red flashing every 0.5 second
	Fault	Red lighting
AUDIBLE ALARM	Low Battery at Battery Mode	Sounding every 2 seconds
	Overload	Sounding every 0.5 second
	Fault	Continuously sounding
PROTECTION	Full Protection	Discharge, overcharge, and overload protection
PHYSICAL	Dimension (DxWxH) mm	224 X 255 X 80
	Net Weight (kgs)	1.7
ENVIRONMENT	Operating Environment	0- 40°C, 0-90 % relative humidity (non-condensing)
	Noise Level	Less than 45dB

* Product specifications are subject to change without further notice.